

Natural changes of population 1961 – 2022

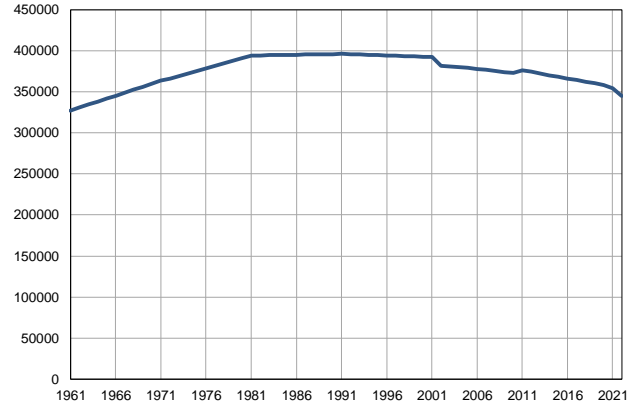
Profile
July 2023

Niš (district)

	1961	2022
Population size	327367	344877
Livebirths, Number	5105	3089
Deaths, Number	2618	5788
Natural increase, Number	2487	-2699
Infants deaths, Number	374	14
Livebirths, per 1,000 population	16	9
Deaths, per 1,000 population	8	17
Natural increase, per 1,000 population	8	-8
Infants deaths, per 1,000 livebirths	73	5

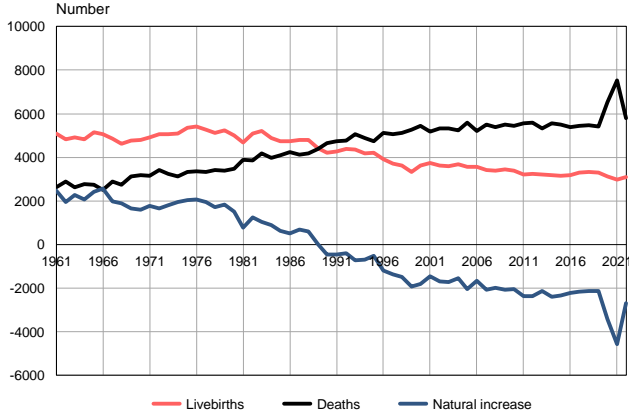
Source: Vital Statistics, SORS

Population size, 1961–2022



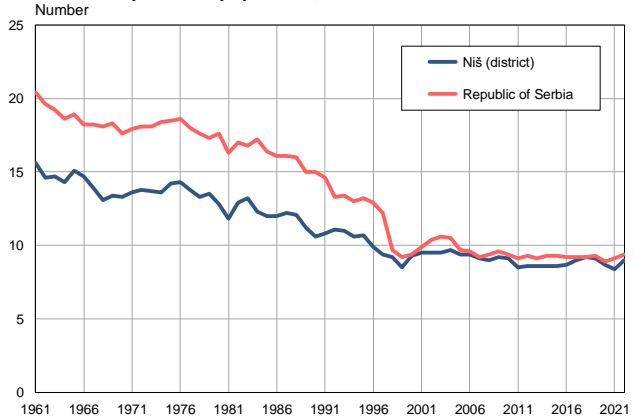
Source: Vital Statistics, SORS

Livebirths, deaths and natural increase, 1961–2022



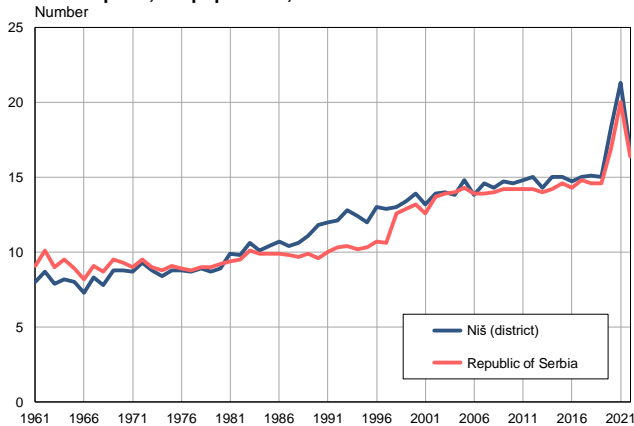
Source: Vital Statistics, SORS

Livebirths per 1,000 population, 1961–2022



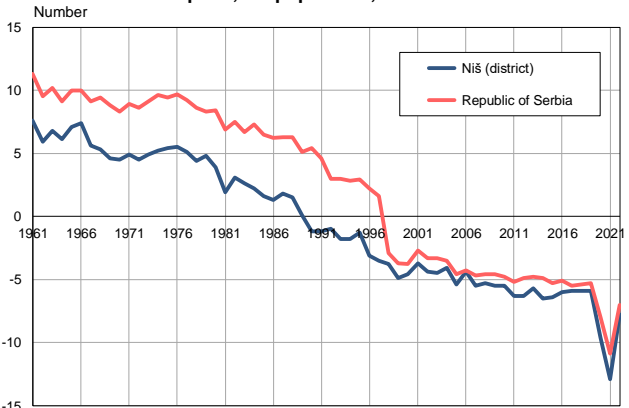
Source: Vital Statistics, SORS

Deaths per 1,000 population, 1961–2022



Source: Vital Statistics, SORS

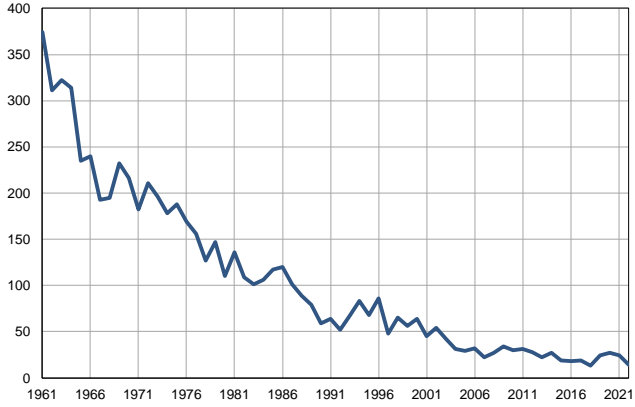
Natural increase per 1,000 population, 1961–2022



Source: Vital Statistics, SORS

Infants deaths, 1961–2022

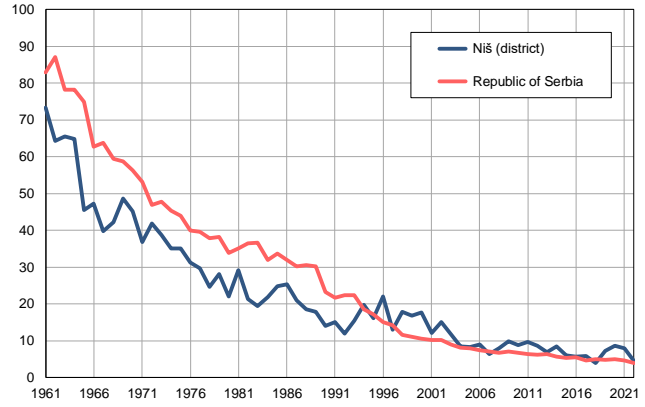
Number



Source: Vital Statistics, SORS

Infants deaths per 1,000 livebirths, 1961–2022

Number



Source: Vital Statistics, SORS

Table. Natural changes of population, Niš (district)

Year	Number of population	Livebirths	Deaths	Natural increase	Infants deaths	per 1000 population			Infant deaths per 1000 livebirths
						Livebirths	Deaths	Natural increase	
1961	327367	5105	2618	2487	374	15.6	8.0	7.6	73.3
1962	330960	4830	2876	1954	311	14.6	8.7	5.9	64.4
1963	334552	4910	2639	2271	322	14.7	7.9	6.8	65.6
1964	338145	4835	2765	2070	314	14.3	8.2	6.1	64.9
1965	341737	5154	2744	2410	235	15.1	8.0	7.1	45.6
1966	345330	5075	2505	2570	240	14.7	7.3	7.4	47.3
1967	348922	4857	2890	1967	193	13.9	8.3	5.6	39.7
1968	352515	4620	2733	1887	195	13.1	7.8	5.3	42.2
1969	356107	4771	3123	1648	232	13.4	8.8	4.6	48.6
1970	359700	4787	3176	1611	216	13.3	8.8	4.5	45.1
1971	363292	4929	3153	1776	182	13.6	8.7	4.9	36.9
1972	366374	5052	3407	1645	211	13.8	9.3	4.5	41.8
1973	369456	5053	3247	1806	196	13.7	8.8	4.9	38.8
1974	372537	5083	3130	1953	178	13.6	8.4	5.2	35.0
1975	375619	5351	3323	2028	188	14.2	8.8	5.4	35.1
1976	378701	5414	3349	2065	169	14.3	8.8	5.5	31.2
1977	381783	5274	3338	1936	156	13.8	8.7	5.1	29.6
1978	384865	5134	3420	1714	127	13.3	8.9	4.4	24.7
1979	387946	5231	3387	1844	147	13.5	8.7	4.8	28.1
1980	391028	4990	3468	1522	110	12.8	8.9	3.9	22.0
1981	394110	4667	3897	770	136	11.8	9.9	1.9	29.1
1982	394303	5103	3865	1238	109	12.9	9.8	3.1	21.4
1983	394497	5204	4176	1028	101	13.2	10.6	2.6	19.4
1984	394690	4873	3987	886	106	12.3	10.1	2.2	21.8
1985	394883	4726	4095	631	117	12.0	10.4	1.6	24.8
1986	395077	4736	4225	511	120	12.0	10.7	1.3	25.3
1987	395270	4805	4110	695	101	12.2	10.4	1.8	21.0
1988	395463	4783	4182	601	89	12.1	10.6	1.5	18.6
1989	395656	4419	4393	26	79	11.2	11.1	0.1	17.9
1990	395850	4214	4659	-445	59	10.6	11.8	-1.2	14.0
1991	396043	4275	4746	-471	64	10.8	12.0	-1.2	15.0
1992	395669	4378	4780	-402	52	11.1	12.1	-1.0	11.9
1993	395296	4350	5075	-725	67	11.0	12.8	-1.8	15.4
1994	394922	4194	4889	-695	83	10.6	12.4	-1.8	19.8
1995	394548	4219	4734	-515	68	10.7	12.0	-1.3	16.1
1996	394174	3911	5107	-1196	86	9.9	13.0	-3.1	22.0
1997	393801	3712	5073	-1361	48	9.4	12.9	-3.5	12.9
1998	393427	3637	5129	-1492	65	9.2	13.0	-3.8	17.9
1999	393053	3331	5257	-1926	56	8.5	13.4	-4.9	16.8
2000	392679	3635	5447	-1812	64	9.3	13.9	-4.6	17.6
2001	392306	3727	5180	-1453	45	9.5	13.2	-3.7	12.1
2002	381801	3610	5313	-1703	54	9.5	13.9	-4.4	15.0
2003	380579	3603	5329	-1726	42	9.5	14.0	-4.5	11.7
2004	379829	3691	5235	-1544	31	9.7	13.8	-4.1	8.4
2005	379076	3550	5597	-2047	29	9.4	14.8	-5.4	8.2

Table. Natural changes of population, Niš (district)

Year	Number of population	Livebirths	Deaths	Natural increase	Infants deaths	per 1000 population			Infant deaths per 1000 livebirths
						Livebirths	Deaths	Natural increase	
2006	378059	3558	5223	-1665	32	9.4	13.8	-4.4	9.0
2007	376946	3425	5510	-2085	22	9.1	14.6	-5.5	6.4
2008	375453	3380	5376	-1996	27	9.0	14.3	-5.3	8.0
2009	374017	3436	5495	-2059	34	9.2	14.7	-5.5	9.9
2010	372670	3400	5457	-2057	30	9.1	14.6	-5.5	8.8
2011	376522	3199	5565	-2366	31	8.5	14.8	-6.3	9.7
2012	374371	3238	5603	-2365	28	8.6	15.0	-6.3	8.6
2013	372220	3208	5328	-2120	22	8.6	14.3	-5.7	6.9
2014	370215	3180	5569	-2389	27	8.6	15.0	-6.5	8.5
2015	368088	3160	5506	-2346	19	8.6	15.0	-6.4	6.0
2016	366056	3188	5392	-2204	18	8.7	14.7	-6.0	5.6
2017	364157	3290	5452	-2162	19	9.0	15.0	-5.9	5.8
2018	362331	3331	5464	-2133	13	9.2	15.1	-5.9	3.9
2019	360494	3290	5423	-2133	24	9.1	15.0	-5.9	7.3
2020	357920	3116	6535	-3419	27	8.7	18.3	-9.6	8.7
2021	354102	2982	7536	-4554	24	8.4	21.3	-12.9	8.0
2022	344877	3089	5788	-2699	14	9.0	16.8	-7.8	4.5

Source: Vital Statistics, SORS

Definitions

Population size

Number of population in the respective year. The data on the number of population in 1961, 1971, 1981 and 1991 are census data, while for the inter-census years the number of population was calculated as an average inter-census difference. From 2002 are given the population estimates that were calculated according to the census of population results and the annual statistics of natural mechanical population movements.

Livebirths

Absolute number of live births in the course of a year. Live born child means a child giving vital signs after birth (breathing, i.e. heartbeat), even for the shortest time, regardless the mother's pregnancy duration.

Deaths

Absolute number of deaths in the course of a year. Deceased is a person that whenever after having been born live, shows permanently stopped vital signs.

Natural increase

Natural population increase is the number of live births minus the number of deaths.

Infants deaths

Absolute number of infants deaths in the course of a year. Deceased infant is a child that after having been born live and before aged one year, shows permanently stopped vital signs.

Livebirths, per 1 000 population

Livebirths rate is the ratio of the number of live births and the population size in the respective year. The number of live births is divided by the population size and then multiplied by 1000.

Deaths, per 1 000 population

General mortality rate represents the ratio between the number of deaths and the population size in the respective year. The number of deaths is divided by population size and then multiplied by 1000.

Natural increase, per 1 000 population

Natural population increase rate is the difference between the number of live births and the number of deaths, in relation to the population size in the respective year.

Natural population increase rate = (number of live births - number of deaths) / population size * 1000

Infants deaths, per 1 000 livebirths

Infant mortality rate is the ratio of deceased children under 1 year of age and live births in the respective year. The mortality rate is expressed per 1000 live births.

Infant mortality rate = (number of deceased children under 1 year of age / number of live births) * 1000

Additional info:



Download all database data in Excel format:

[Data](#)



DevInfo profiles:

devinfo.stat.gov.rs/SerbiaProfileLauncher/?lang=en



DevInfo online database:

devinfo.stat.gov.rs/vitalna



For additional information or questions please contact:

devinfo@stat.gov.rs